

## QUICK INSTALLATION GUIDE Network Management Card RMCARD202

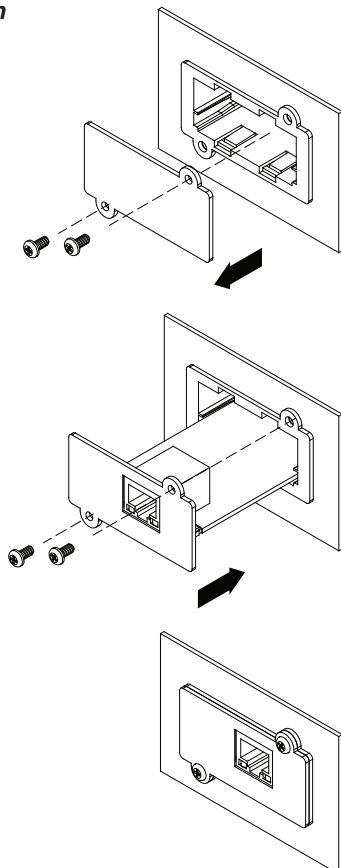
Intelligent Network Management Card allows a UPS system to be managed, monitored, and configured

K09-0000064-00

### INSTALLATION GUIDE

#### Step 1. Hardware Installation

1. Turn off the UPS before removing the expansion port cover on the UPS.
2. Remove the two retaining screws of the expansion port cover then remove the cover.
3. Install the CyberPower Network Management Card into the expansion port.
4. Re-install and tighten the retaining screws.
5. Connect the Ethernet cable to the LAN port of the CyberPower Network Management Card.
6. Turn on the UPS.



#### Definitions for LED Indicators

| Link LED color  | Condition   |
|-----------------|---|
| Off             | The Network Management Card is not connected to the Network or the Network Management Card power is off |
| On(Yellow)      | The Network Management Card is connected to the Network   |
| TX/RX LED color |   |
| Off             | The Network Management Card power is off  |
| On(Green)       | The Network Management Card power is on   |
| Flash           | - Receiving/transmitting data packet<br>- Reset finished  |

#### Step 2. Configure the IP address for the CyberPower Network Management Card.

##### Method 1: Using the SNMP Card Configuration Tool

1. Install the SNMP Card Configuration Tool from the included CD. It is located on the CD in the \tools\network folder. Double click the "Power Device Network Utility" installation file, "Setup.msi" to begin the installation.
2. After installation is complete, run the "Power Device Network Utility" program. Under "All Programs", select "CyberPower Power Device Network Utility".
3. The main dialog of the SNMP Card Configuration Tool program is shown in Figure. 1. The configuration tool will display all CyberPower network cards present on the network. The "Refresh" button is used to search the entire local network for SNMP cards. (TD – The second sentence was really choppy. I took a shot at fixing it, but feel free to make additional adjustments.)

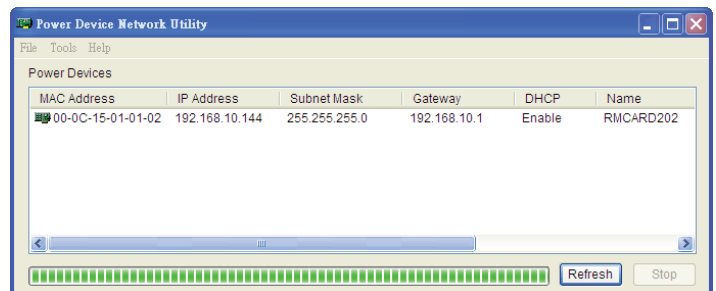


Figure 1. The main window of the "Power Device Network Utility" program.

4. Select the SNMP card you are setting up. Click on the Tools menu and select "Device Setup" or double click the SNMP card you want to configure.
5. You can modify the IP Address, Subnet Mask, and Gateway address for the Device MAC Address listed in the Device Network Settings window, as shown in figure 2.
6. Modify the IP, subnet mask or gateway address. Enter the new addresses into the corresponding fields.

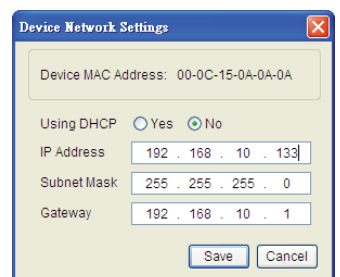


Figure 2. The SNMP card setting window.

7. You will need to enter a User Name and Password for the SNMP card (Figure 3) in the authentication window, as shown in figure 3. \*Default user name: cyber; Default password: cyber.

The image shows a window titled 'Authentication' with a close button (X) in the top right corner. Inside the window, there is a text prompt: 'Enter the user name and password to save changes.' Below this prompt are two input fields: 'User name:' and 'Password:'. At the bottom of the window are two buttons: 'OK' and 'Cancel'.

Figure 3. Authentication window.

8. If IP address is successfully you, you will see a message that the IP set up is OK, as shown in figure 4.

The image shows a window titled 'Network Settings Information' with a close button (X) in the top right corner. Inside the window, there is an information icon (i) on the left. The main content area displays the following information: 'Setup MAC: 00-0C-15-0A-0A-0A OK:', 'Power Device Network Information', and a table with the following data: \*DHCP: Disable, IP Address: 192.168.10.134, Subnet Mask: 255.255.255.0, Gateway: 192.168.10.1. Below the table is a note: 'Note: The \* denotes a modified field'. At the bottom of the window is an 'OK' button.

Figure 4. Setup IP Address successfully message.

## Method 2: Using a command prompt

1. Obtain the MAC address from the label on the Network Management Card rear panel. Each Management card has a unique MAC address.

2. Use the ARP command to set the IP address.

### Example:

To assign the IP Address 192.168.20.240 for the Network Management Card, which has a MAC address of 00-0C-15-00-00-01 you will type in the following command prompt from a PC connected to the same network as the Network Management Card.

- (1) Type in "arp-s 192.168.20.240 00-0C-15-00-00-01" then press **Enter**.

3. Use the Ping command to assign a size of 123 bytes to the IP.

- (1) Type in "ping 192.168.20.240 -l 123" then press **Enter**
- (2) If the replies are received, your computer can communicate with the IP address.

## WEB INTERFACE Login Account

There are two user account types.

- Administrator (default username : cyber ; default password : **cyber**)
- Viewer (default username : device ; default password : **cyber**)

The administrator can access full functions, including enable/disable the

Viewer account, and the view can access the read function but can not control or change any setting.

## Trouble Shooting

| Problem   | Solution  |
|---|---|
| Unable to configure the Management Card by method1 or method2 | <ol style="list-style-type: none"> <li>1. Check the LED status , the normal condition is both yellow and green led is on.<br/>If green led is off :<br/>► Check if the Management Card is properly seated in the UPS and the UPS power is on.<br/>If yellow led is off :<br/>► Check if the network connection is valid</li> <li>2. Check if the operated PC is on the same physical network as Management Card is .</li> </ol> |
| Unable to ping the Management Card.                           | <ol style="list-style-type: none"> <li>1. Use method1 and method2 to get correct IP address of the Management Card.</li> <li>2. If the operated PC is on the different physical network from the Management Card, verify the setting of subnet mask and the IP address of gateway.</li> </ol>   |
| Lost the user name and password                               | Please refer to the " <b>Reset to Default Setting / Recover from a Lost Password</b> " part in the user's manual.   |

### CyberPower North America

CyberPower Systems (USA), Inc.  
4241 12th Avenue East Suite 400 Shakopee, MN 55379  
Tel: 877-297-6937 Fax: 952-403-0009  
Website: CPSwww.com E-mail: sales@cyberpowersystems.com

### CyberPower Europe

CyberPower Systems B.V.  
Flight Forum 3545,5657 DW Eindhoven, The Netherlands  
Tel: +31 (0)40 2348170 Fax: +31 (0)40 2340314  
Website: http://eu.cyberpowersystems.com  
E-mail: sales@cyberpower-eu.com

### Cyber Power Systems France

Z.I. Saint Séverin 28220 CLOYES sur le Loir – France  
Tél : +33(0)2 37 98 61 50 E-mail : sales@cpsww.com.fr