

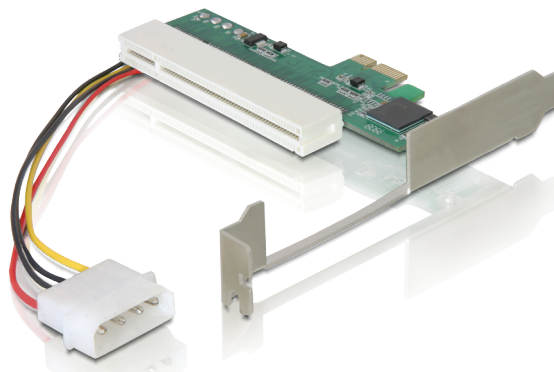


PCI Express x1 > PCI Card 32bit

Description

This PCI Express x1 card by Delock enables you to use standard and low profile PCI extension cards or to expand your PC by an additional PCI interface at the same time. The card can be installed easily and will be supplied with power from the PC power supply through the attached 4pin Molex connector. The aperture in the bracket will help you to reach the PCI card inside the case or to connect different devices.

Images



Ref. 89223
EAN 4043619892235

Specification

- PCI Express specification 1.0
- For PCI 32bit 33MHz standard and low profile cards
- Incl. 5V power cable 19cm with 4pin connector
- Dimension-aperture: 4,8 x 1,8 cm

System requirement

- PC with a free PCI Express card slot

Package

- Retail box